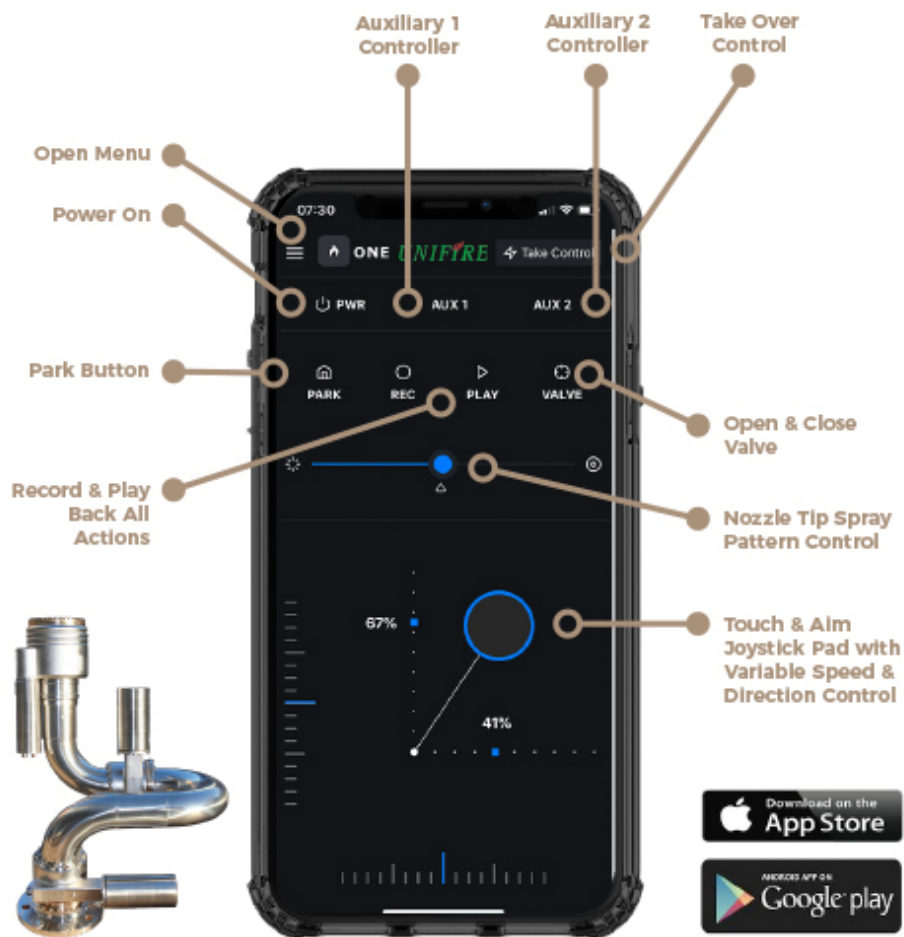




UNIFIRE

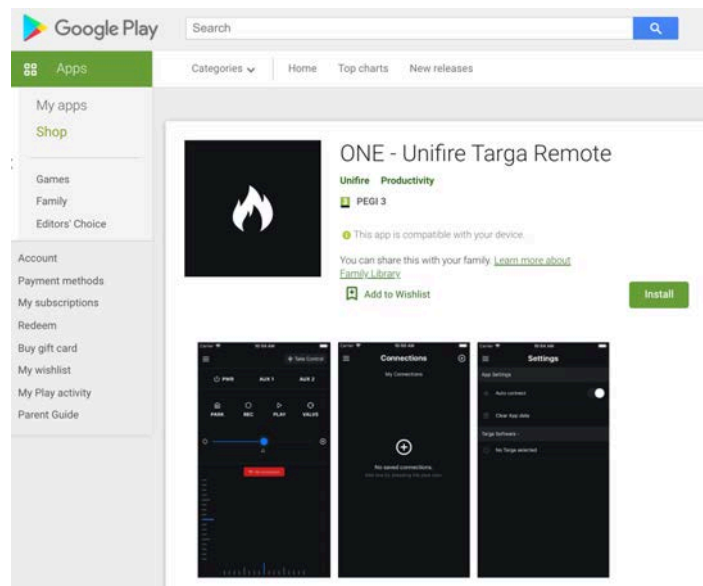
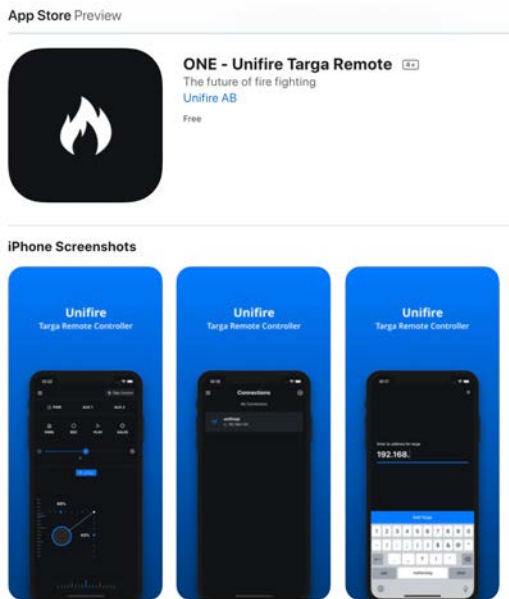
ONE App

Setup & Operation Instructions



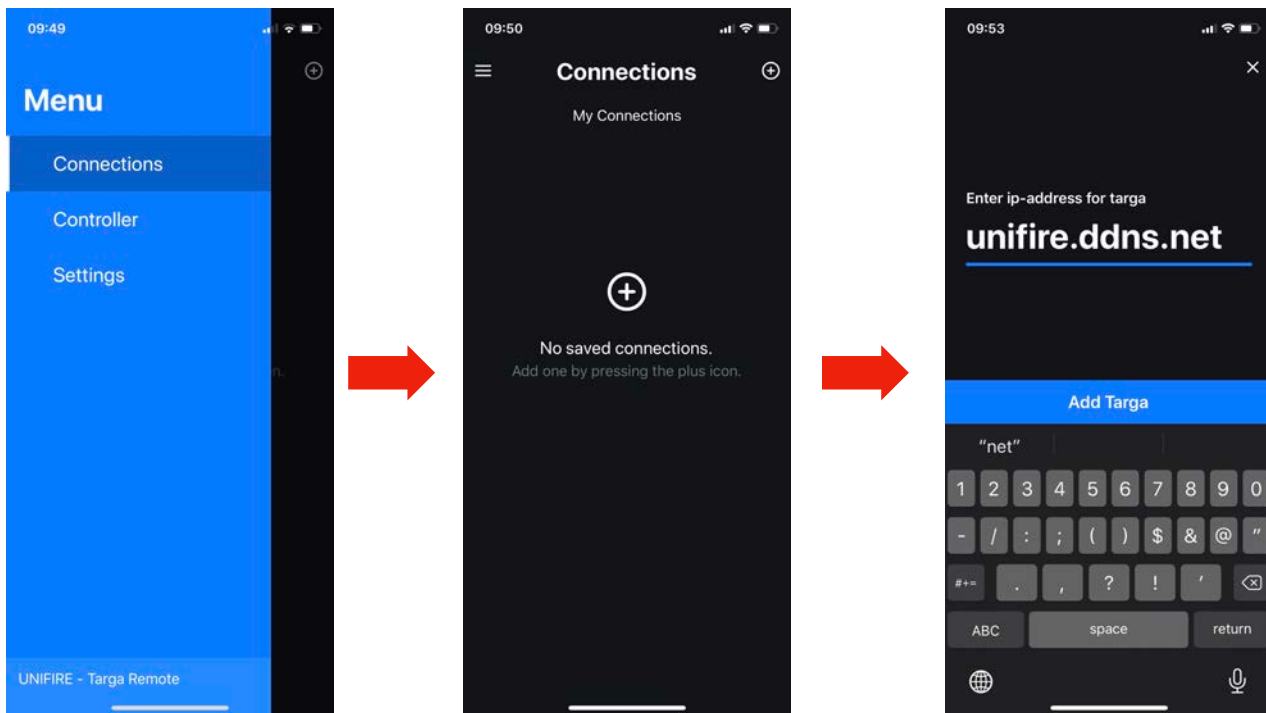
STEP 1 - Download Unifire's "One" App

From the [Apple Store](#) or [Google Play](#), download Unifire's ONE App "ONE - Unifire Targa Remote"



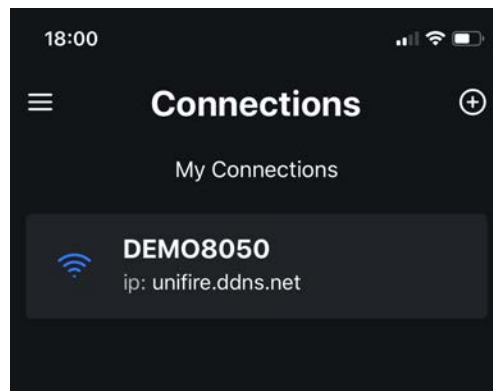
STEP 2 - Setup The "ONE" App

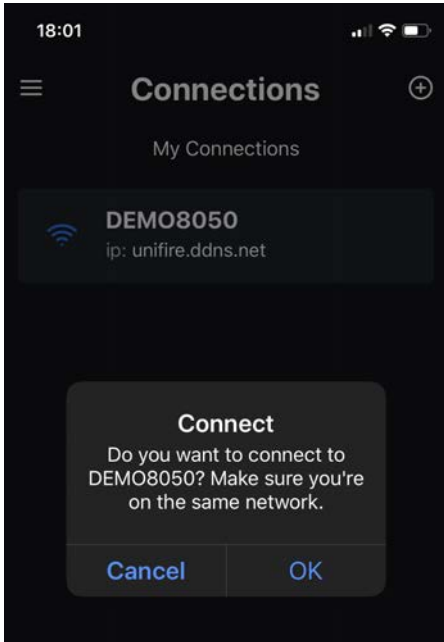
- A). Open the ONE App and go to "Connections"
- B). Click the + Button to Add a New Connection
- C). Enter the IP Address of router connected to the Unifire TARGA PLC
- D) Click the "Add Targa" button to save the connection.



- E). After clicking the Add Targa button, you will see a screen similar to the following, *but with your system name and IP address*. Click on the connection shown, as follows:

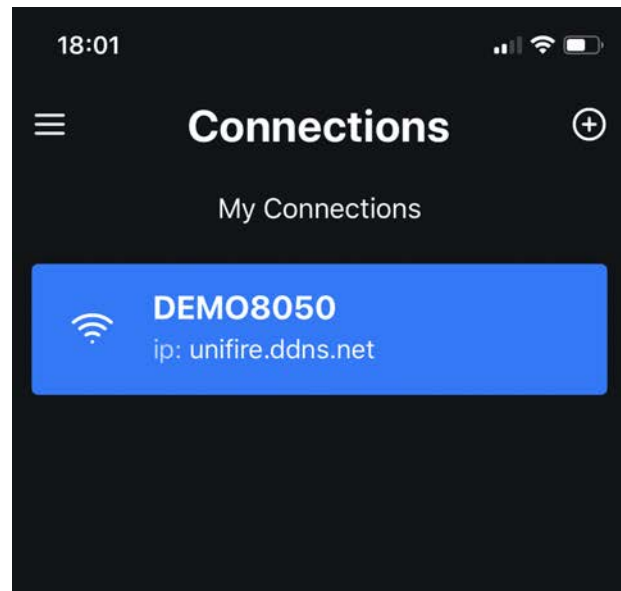
Click Here to Connect:
(name & IP address will vary)





Then Click **OK**:

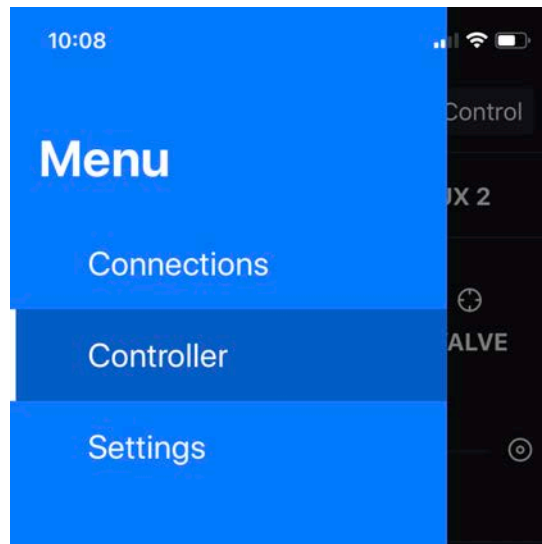
Successful connection
will look like this:



Now you are connected to the Robotic Nozzle's PLC and ready to control the system with the ONE app.

STEP 3 - Take Control

Click on "Controller"

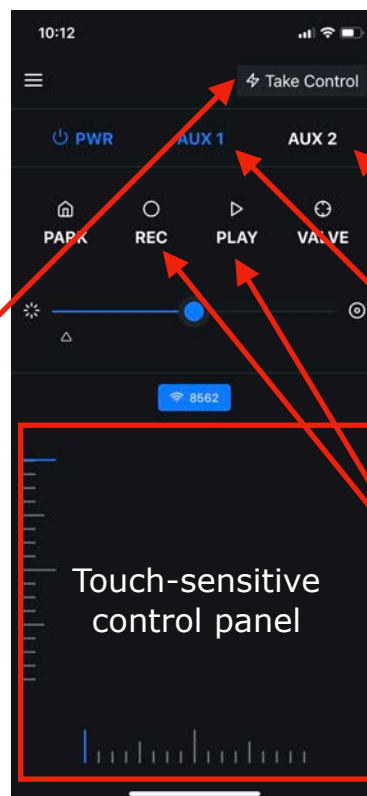


Click on "PWR"



Be sure that the PWR button is BLUE. If it's white, press it to turn on the water cannon.

If two people try to operate a water cannon, to switch control from one person to the other, press the "Take Control" button.



AUX2 is the Force 80

AUX1 is the Force 50

Press the REC button to record all of your actions; then PLAY to play them back continuously (until you take control again).

QUESTIONS? Email us at support@Unifire.com